



Beispiel:

Foto-Verwaltung

Fotografen-Verwaltung

DBMS



Anwendung

Anwendung

DBMS

Dateisystem



DBMS

Foto-Verwaltung

Fotografen-Verwaltung

Sicht 1:
Foto-Verwaltung

Sicht 2:
Fotografen-
Verwaltung

Teilschemata

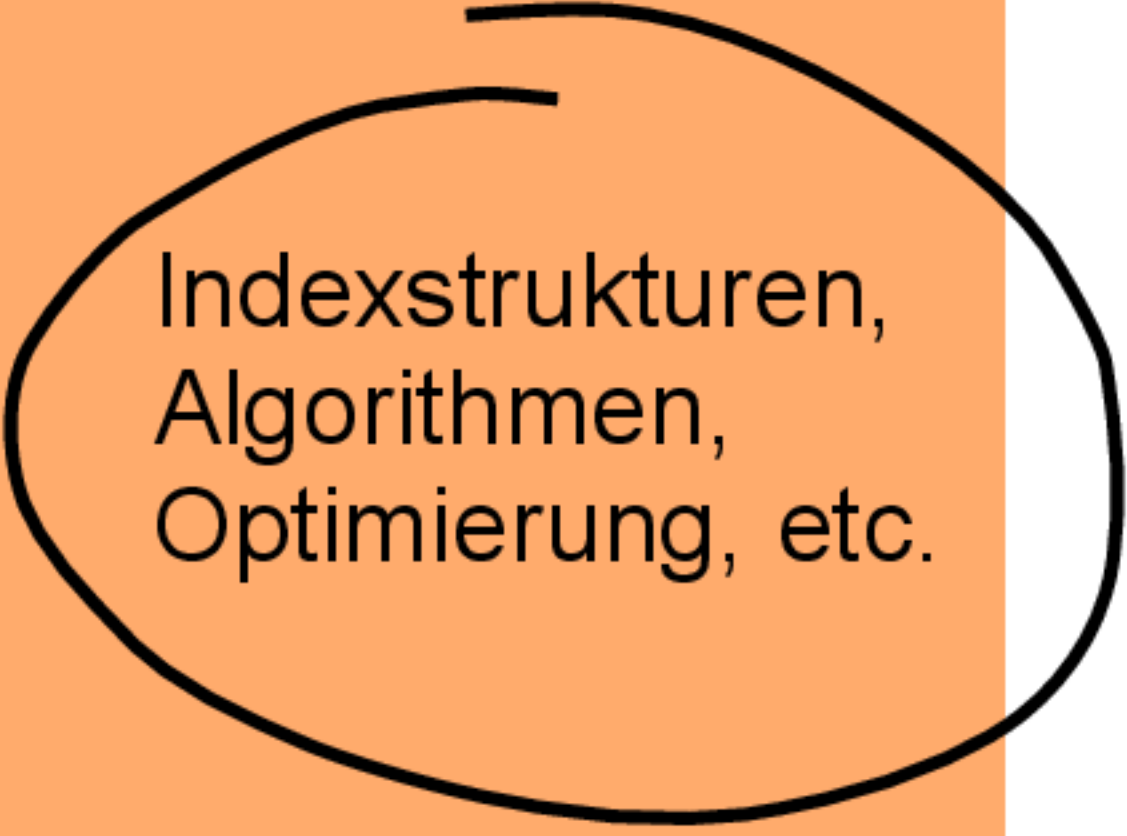
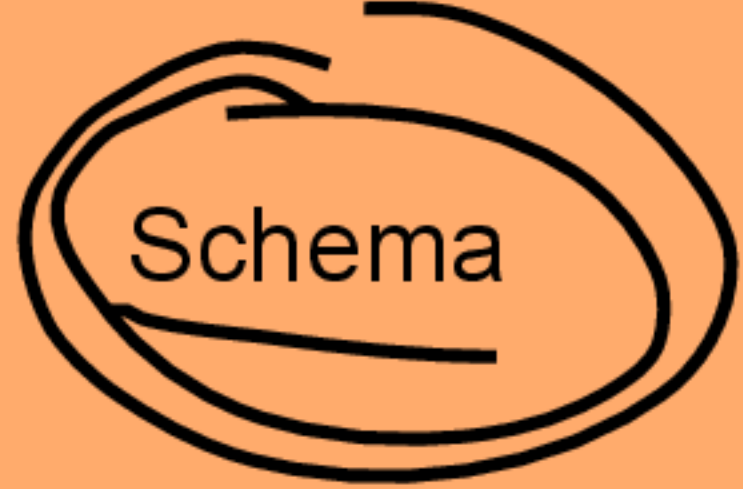
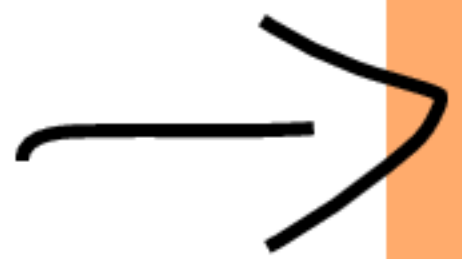
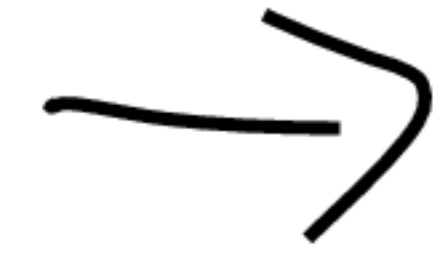
logische Ebene

Schema

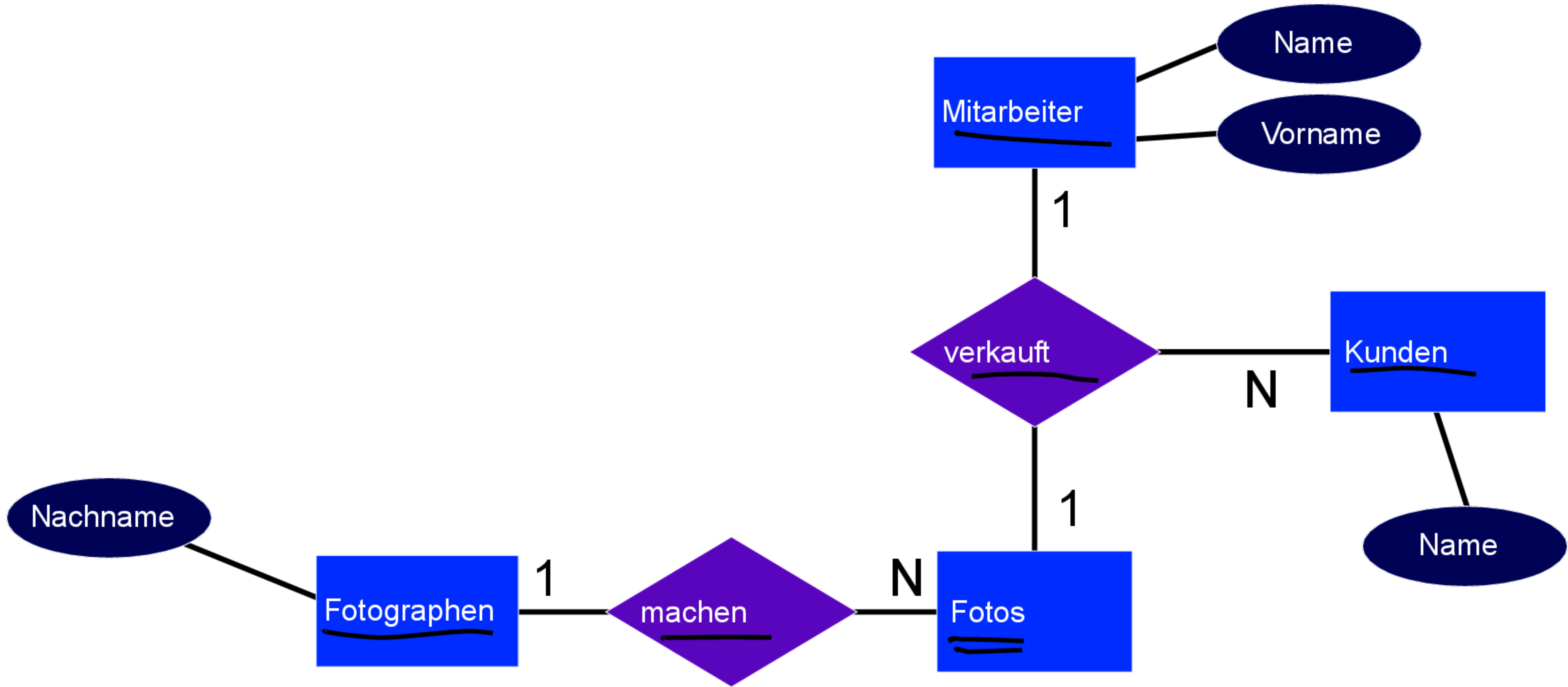
physische Ebene

Indexstrukturen,
Algorithmen,
Optimierung, etc.

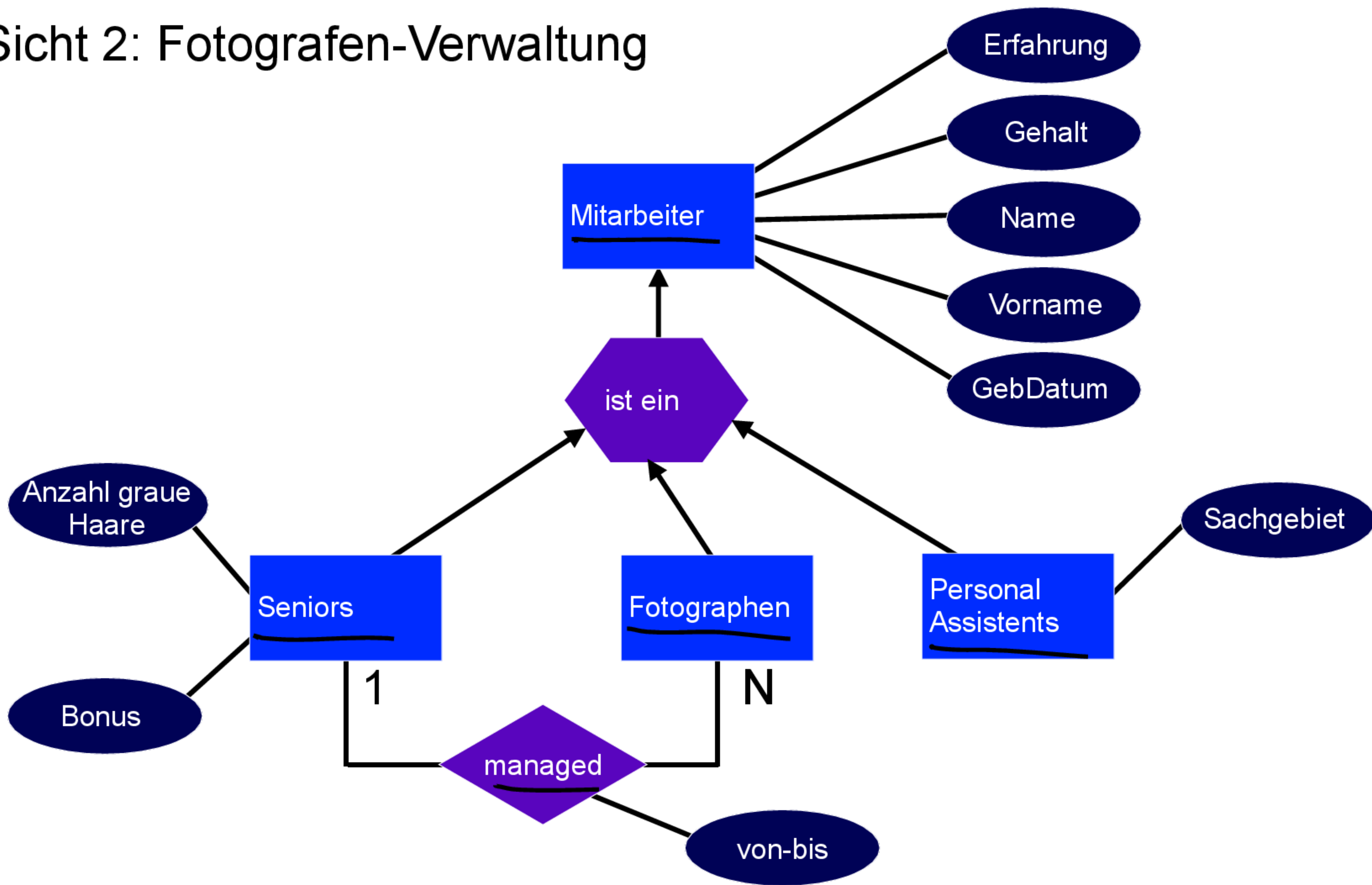
Dateisystem



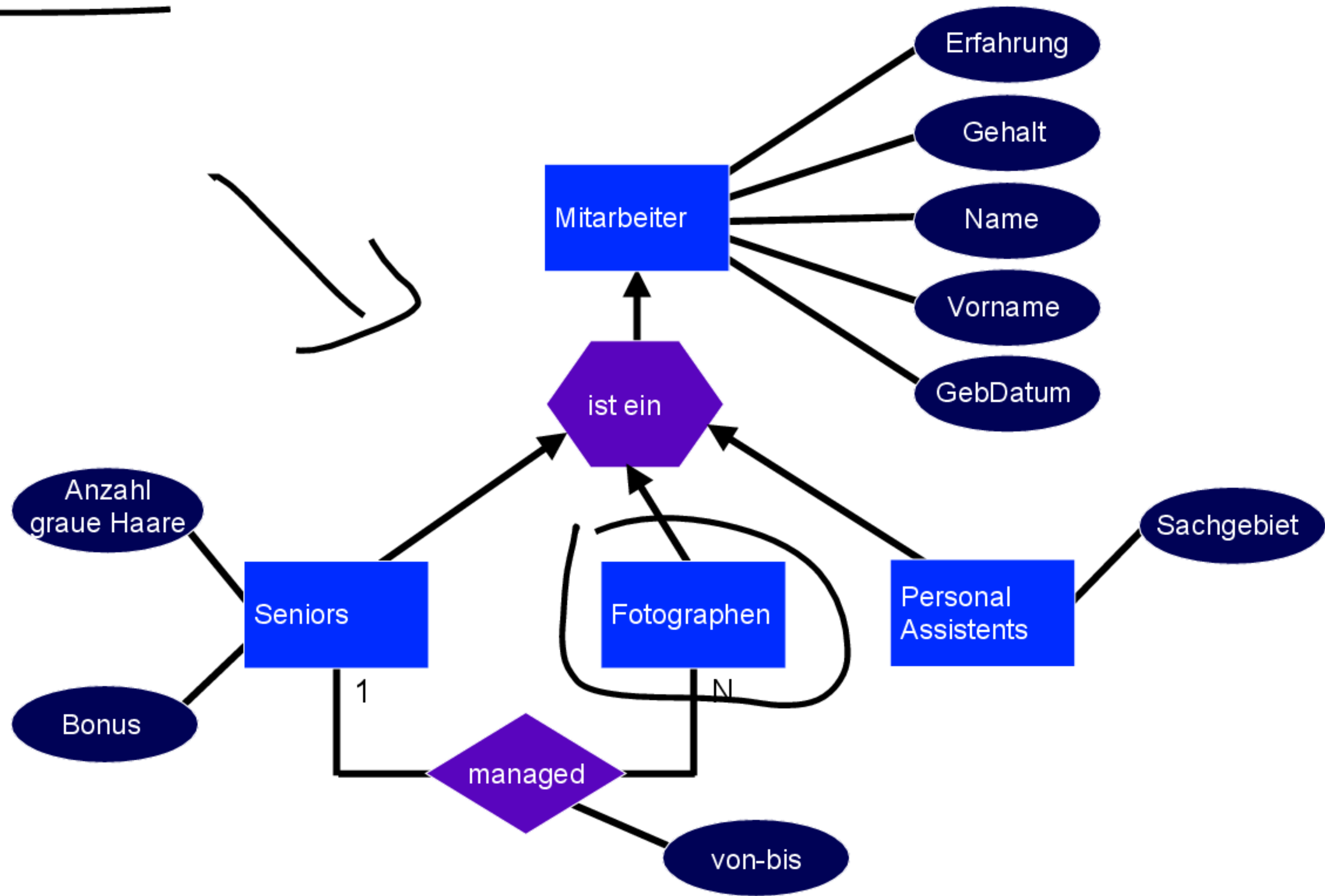
Sicht 1: Foto-Verwaltung



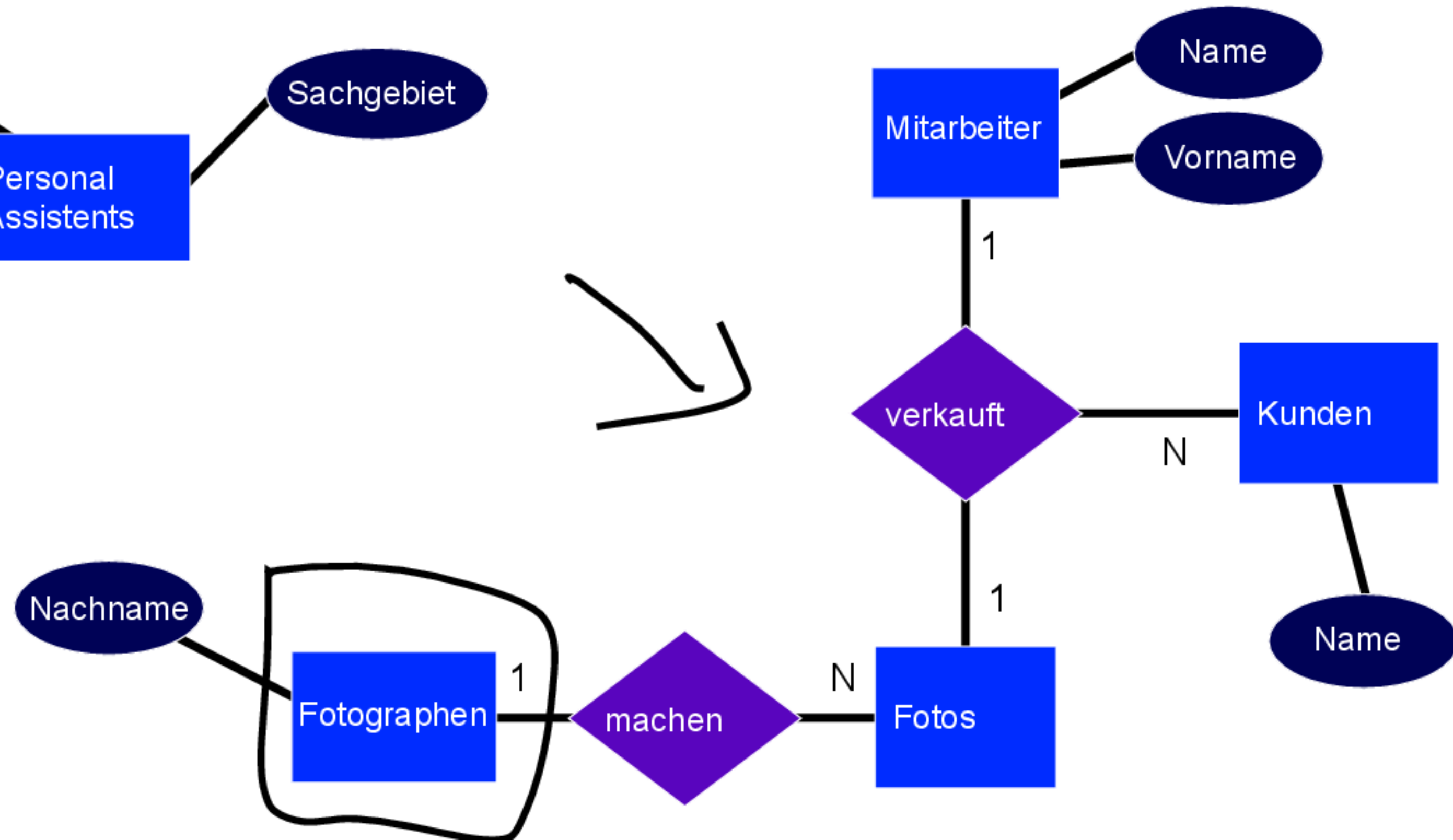
Sicht 2: Fotografen-Verwaltung



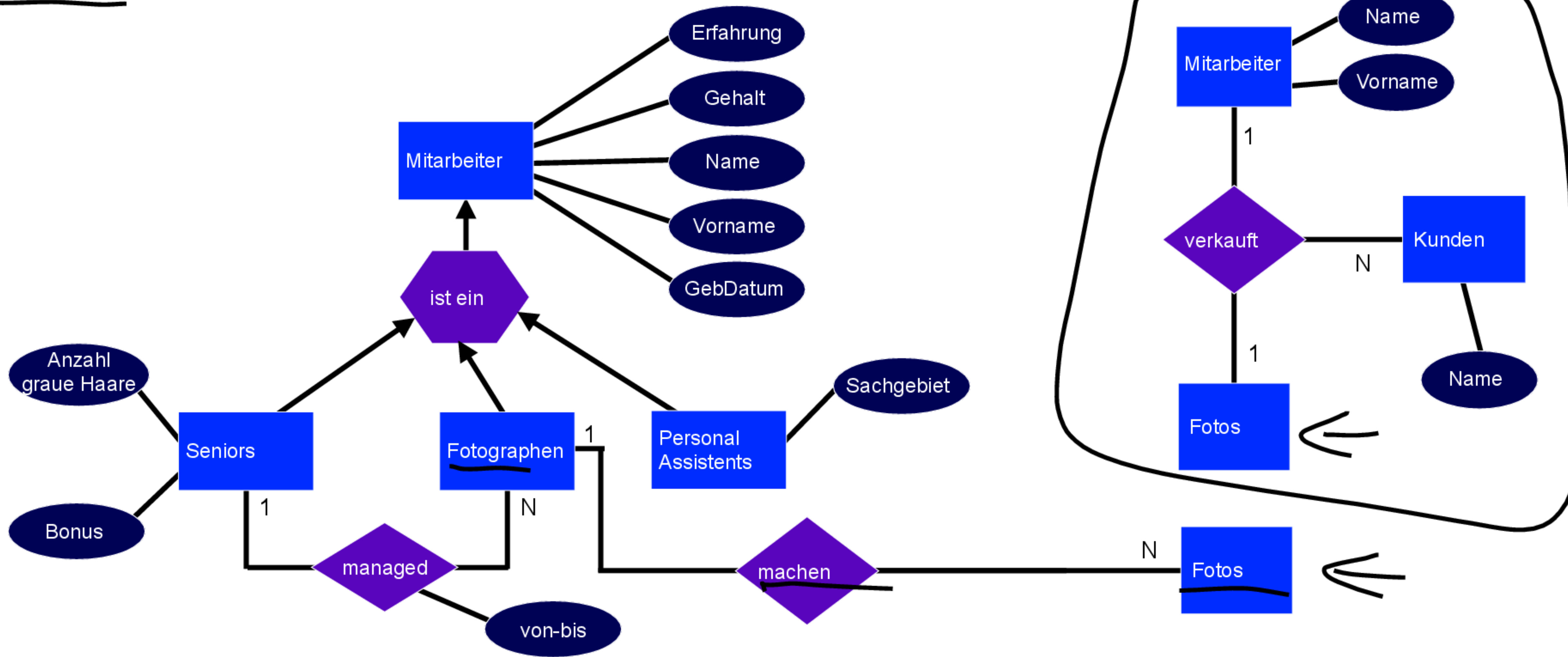
Sicht 2



Sicht 1

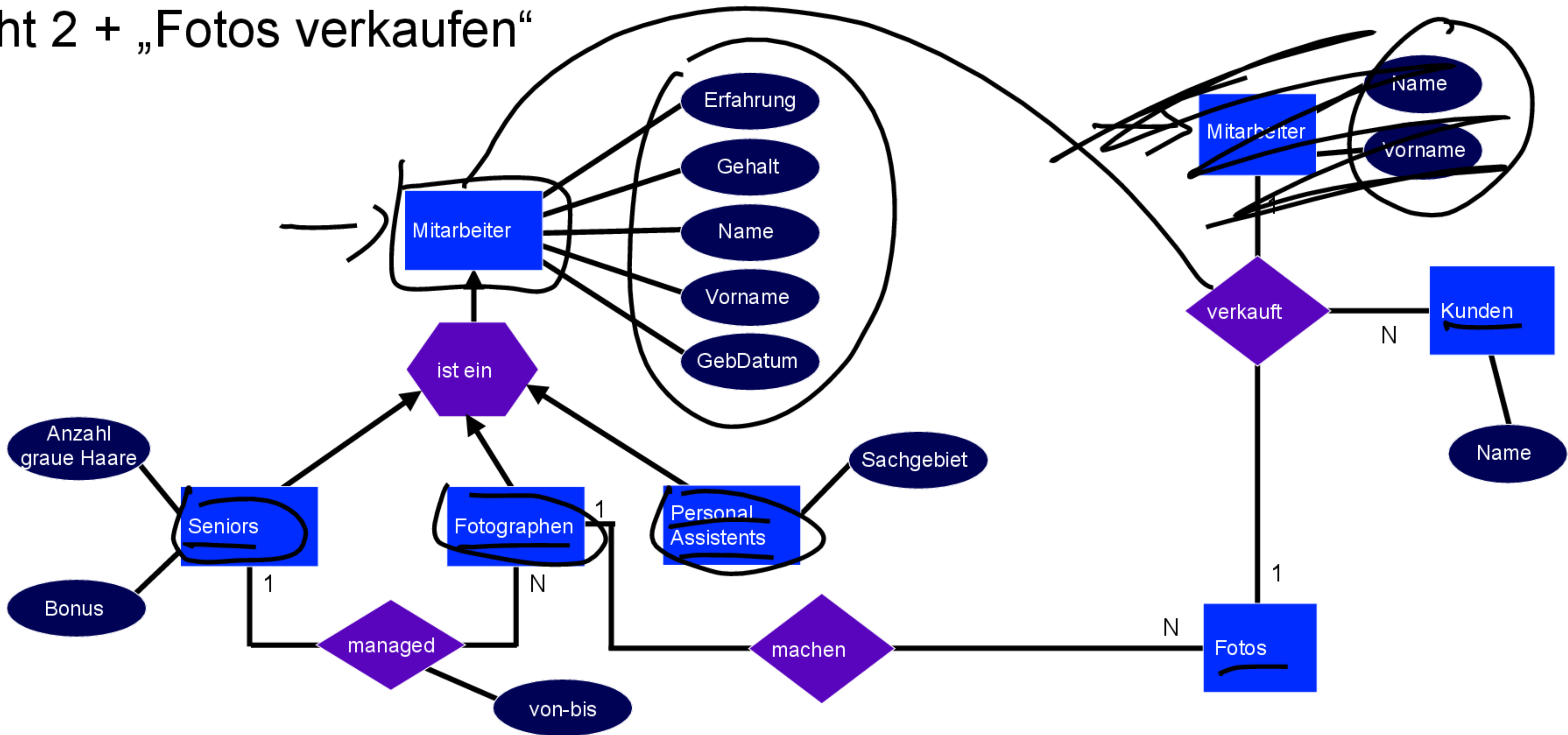


Sicht 2 + „Fotos machen“

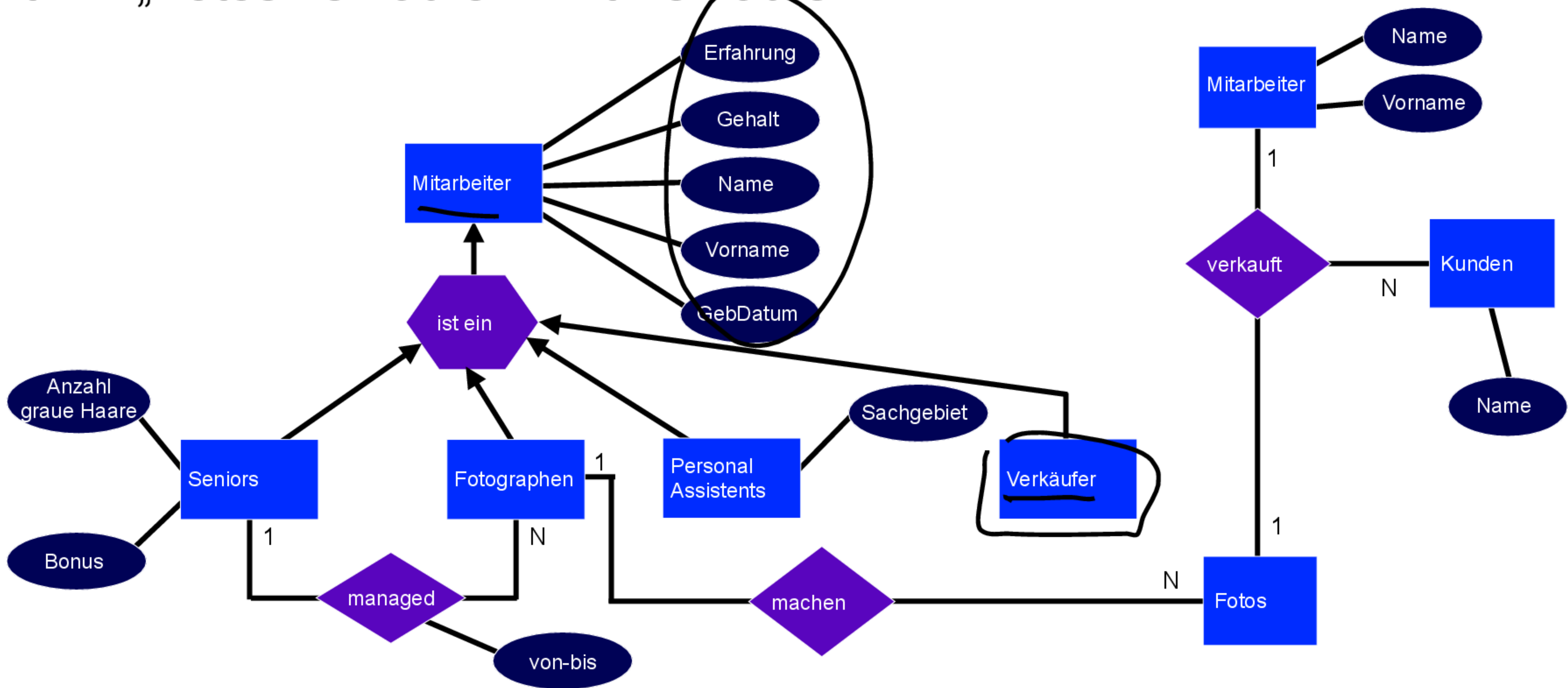


↑ → Datenbank schema

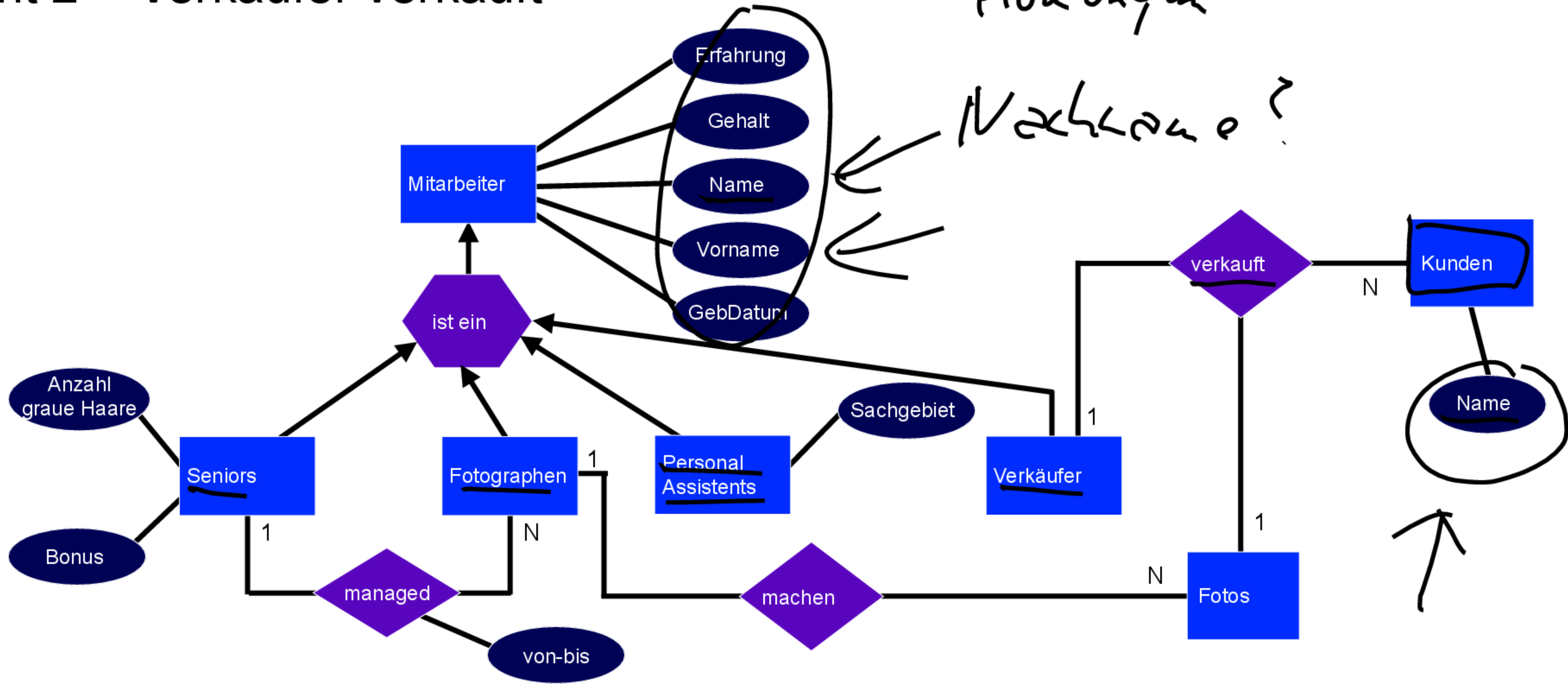
Sicht 2 + „Fotos verkaufen“



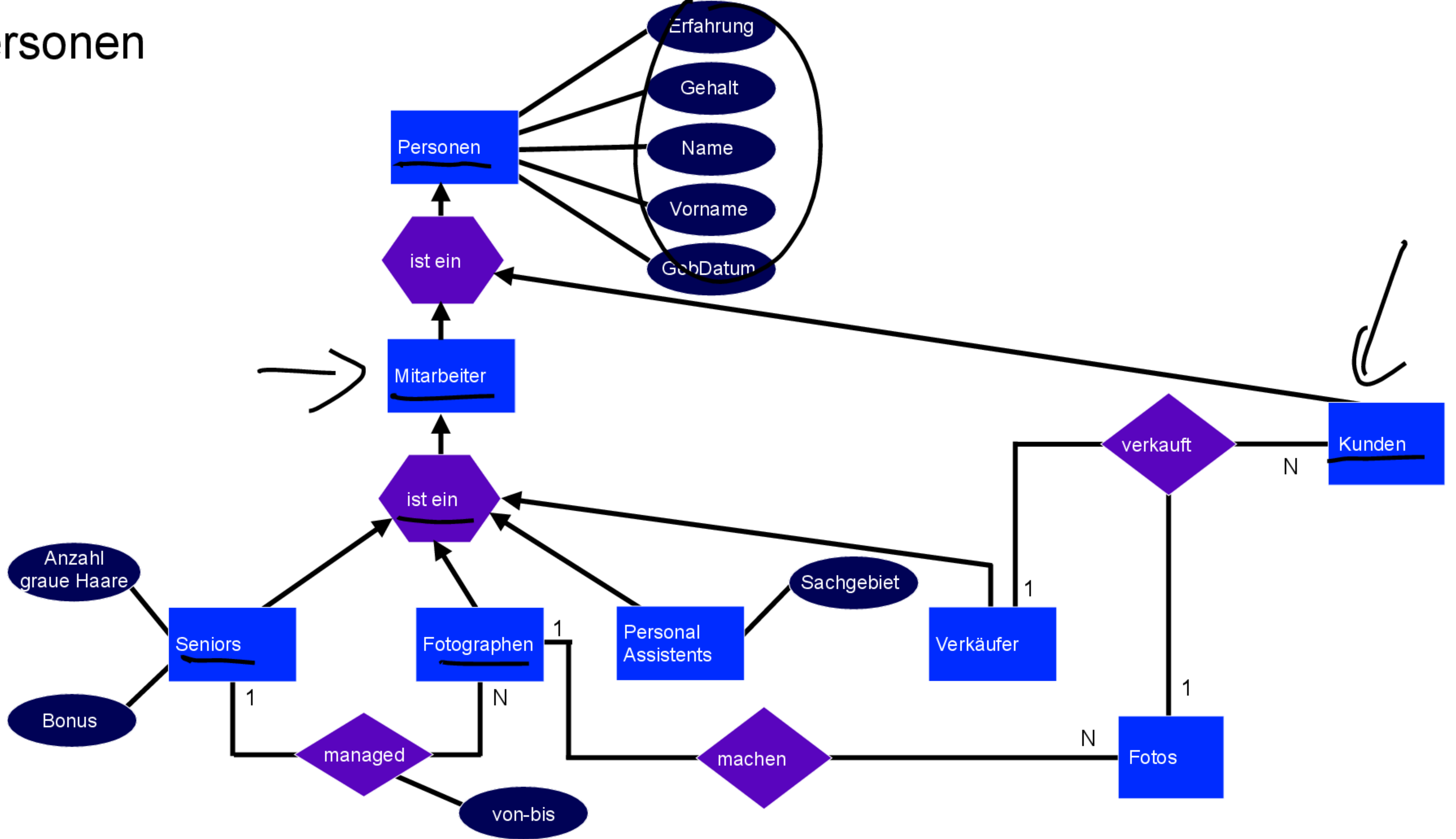
Sicht 2 + „Fotos verkaufen“ mit Verkäufer



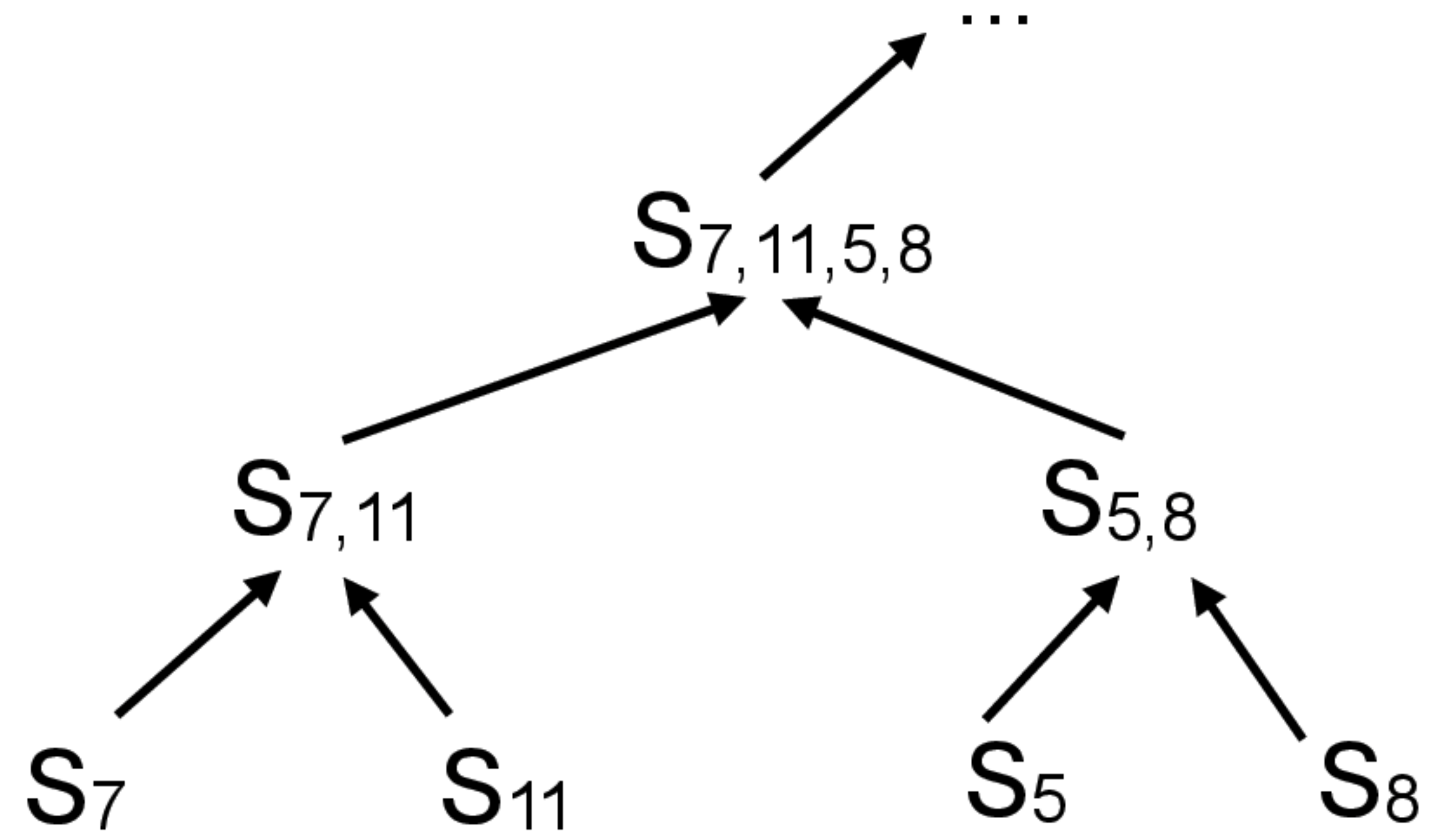
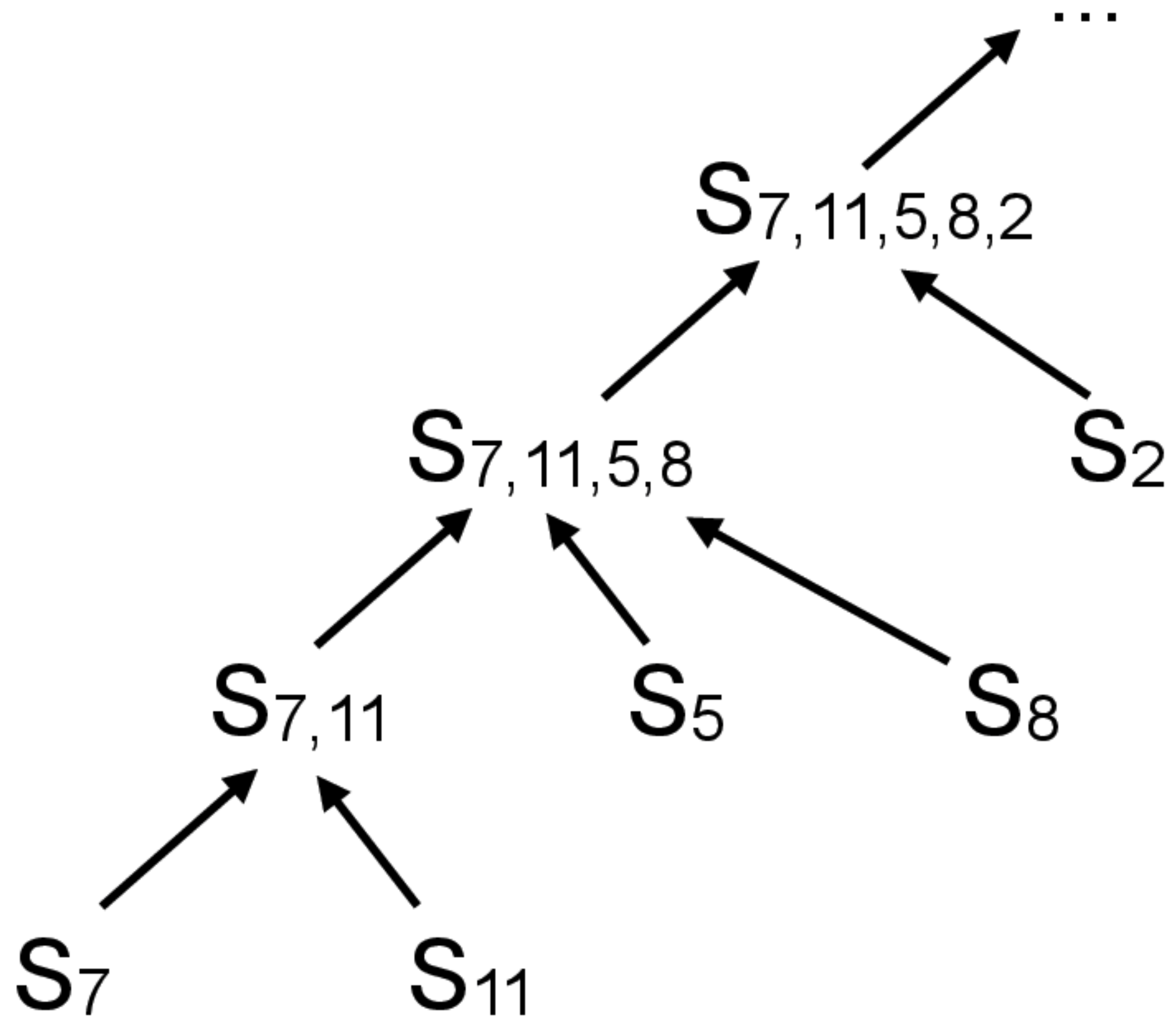
Sicht 2 + Verkäufer verkauft



Personen



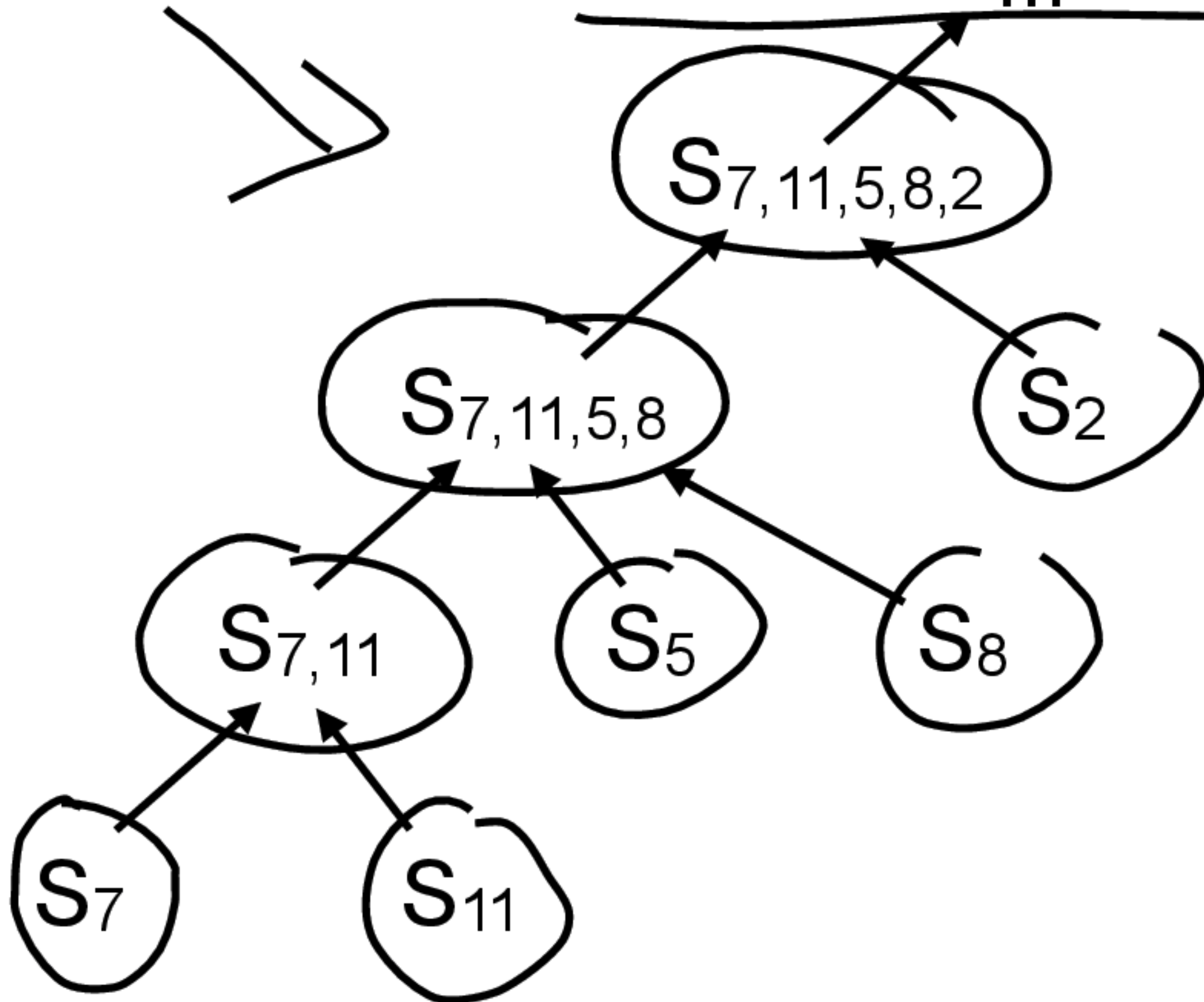
Sichtenkonsolidierung



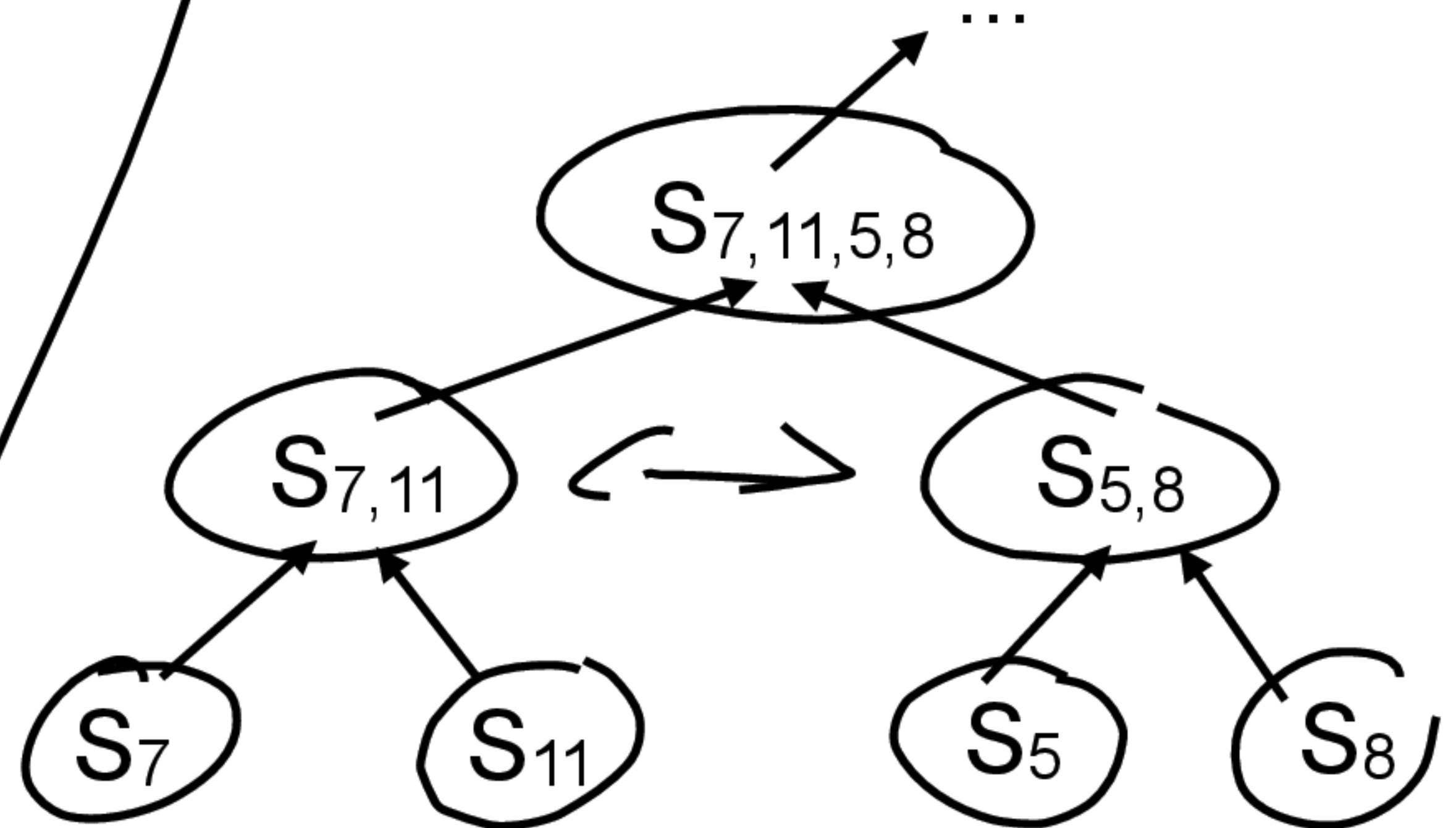
Sichtenkonsolidierung

Sichten = $\{S_1, \dots, S_{n \geq 11}\}$

→ left deep tree



→ bushy tree



Copyrights and Credits

© **iStock.com:**

gbrundin; JohnnyGreig ; doglikehorse; excentric_01; RyanJLane; aldra

CC:

artico2

http://commons.wikimedia.org/wiki/File:East_side_gallery.JPG?uselang=de

<http://creativecommons.org/licenses/by-sa/3.0/legalcode>

other:

Jens Dittrich